

ZWCAD

ZWCAD

Powerful, reliable,
and DWG compatible 2D CAD

WHO TRUST US



ZWSOFT

ZWSOFT is reliable provider of all-in-one CAx solutions. With over 20 years' experience in the industry, its products and service have been proven by over 900,000 clients across 90 countries.

Room 01-08, 32/F, Pearl River Tower, No.15, Zhujiang West Road, Tianhe District, Guangzhou, China, 510623

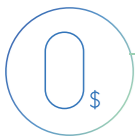
+86-20-38289780

+86-20-38288676

sales@zwsoft.com

www.zwsoft.com

WHY ZWCAD



Zero Switching Costs

Seamless DWG compatibility, familiar interface and easy-to-use commands.



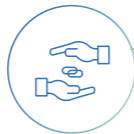
Improved Design Efficiency

Design Center, Tool Palettes and accelerated file processing.



Rich APIs

It supports LISP, VBA, ZRX, and .NET, so you can port and develop industry specific applications smoothly.



Flexible Licensing

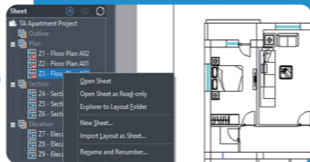
Perpetual licenses. Stand-alone or network. Upgrade or not. It's your choice.

WHAT'S NEW IN ZWCAD 2023

Efficient, User-friendly, Connected

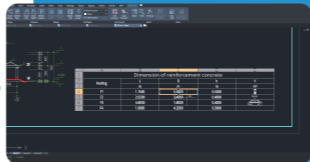
01 Sheet Set Manager

View, access, manage, and plot multiple drawings in Sheet Set Manager.



02 More Powerful Table Tool

Satisfy your various needs with new functions like Match Cell and Block Insertion.



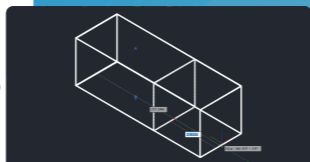
03 Faster Operations

Faster in frequent-used operations including Select, Delete, Pan, Zoom and 3D Render.



04 Edit a 3D Entity Using Grips

Change a 3D entity's shape easily by dragging the grips.



05 Compatible with 3D Mouse

Rotate, pan or zoom a 3D entity freely on a 3D mouse from 3Dconnexion®.



ZWCAD VS ACAD

		ZWCAD		ACAD	
		Std	Pro	LT	FULL
Compatibility	Compatible with DWG	●	●	●	●
	Compatible with DWT, DXF, DWF, DWFx	●	●	●	●
	PDF & DGN Import	●	●	●	●
Interface	Classic and Ribbon Interfaces	●	●	●	●
	Customize User Interface (CUI)	●	●	●	●
	Dark / Light UI	●	●	●	●
	Tool Palettes	●	●	●	●
	Properties Palette	●	●	●	●
	Dynamic Input	●	●	●	●
	Auto-complete Command Entry	●	●	●	●
	Drawing Tab Switching	●	●	●	●
	Adaptive Grid	●	●	●	●
Annotation	Leader & MLeader	●	●	●	●
	Associative Dimension	●	●	●	●
	Text and MText	●	●	●	●
	Annotative Object	●	●	●	●
	Revcloud	●	●	●	●
	Text In-place Editing	●	●	●	●
	Hatch / Gradient Hatch	●	●	●	●
	Super Hatch	●	●	●	●
	Tables & Table Styles	●	●	●	●
	Field	●	●	●	●
		●	●	●	●
Layer	Layer Properties Manager	●	●	●	●
	Layer Filter	●	●	●	●
	Layer State Manager	●	●	●	●
Xref, Block & Attribute	OLE	●	●	●	●
	Raster Images	●	●	●	●
	Underlay (DWG, DWF(x), PDF)	●	●	●	●
	Xrefs In-place Editing	●	●	●	●
	Multiple Blocks Inserting	●	●	●	●
	Block Attribute Manager	●	●	●	●
3D	Solid, Surface, Mesh Modeling	●	●	●	●
	Photorealistic Rendering	●	●	●	●
	Visual Style	●	●	●	●
	3D Orbit	●	●	●	●
	ACIS Viewing	●	●	●	●
	IFC Import	●	●	●	★
	3D mouse	●	●	●	●
Programming	MNU, MNS and MNL File Support	●	●	●	●
	ActiveX API	●	●	●	●
	LISP Support	●	●	●	●
	Visual Basic for Applications (VBA)	●	●	●	●
	Runtime Eextension (ZRX/ARX)	●	●	●	●
	.NET	●	●	●	●
	Lisp Debugger	●	●	●	●
Output	CTB & STB Plot Style	●	●	●	●
	Plot	●	●	●	●
	Publish	●	●	●	●
	Export	●	●	●	●
	eTransmit	●	●	●	●
Innovation	SmartMouse	●	●	●	●
	SmartVoice	●	●	●	●
	SmartSelect	●	●	●	●
	SmartPlot	●	●	●	●
	Barcode & QR Code	●	●	●	●
Others	Sheet Set Manager	●	●	●	●
	File Compare	●	●	●	●
	Quick Calculator	●	●	●	●
	Match Property	●	●	●	●
	Group	●	●	●	●
	Quick Select	●	●	●	●
	Multiline and Multiline Style	●	●	●	●
	Parametric Drawing	●	●	●	●
	Express Tools	●	●	●	●
	Data Extraction	●	●	●	●
		●	●	●	●

*Only available when the architecture toolset is loaded.